

# Monolithic crystal filter

## MQF26.5-2000/01



### Application

- 2 pol filter
- i.f.- filter
- use in mobile and stationary transceivers

### Limiting values

		Unit	Value
Center frequency	$f_0$	MHz	26.5
Insertion loss		dB	$\leq 3.0$
Pass band at 3.0 dB		kHz	$\pm 10.0$
Ripple in pass band	$f_0 \pm 5.0$ kHz	dB	$\leq 1.0$
Stop band attenuation	$f_0 \pm 100$ kHz	dB	$\geq 20$
Alternate attenuation	$f_0 \pm 910$ kHz	dB	$> 50$
Spurious response	$f_0 \pm 0.1 \dots 1.5$ MHz	dB	$> 10$

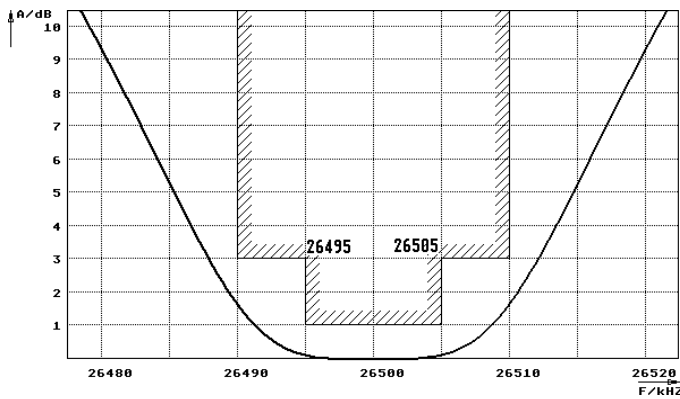
### Terminating impedance Z

R1    C1	Ohm/pF	2500    0.5
R2    C2	Ohm/pF	2500    0.5

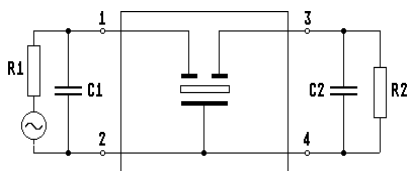
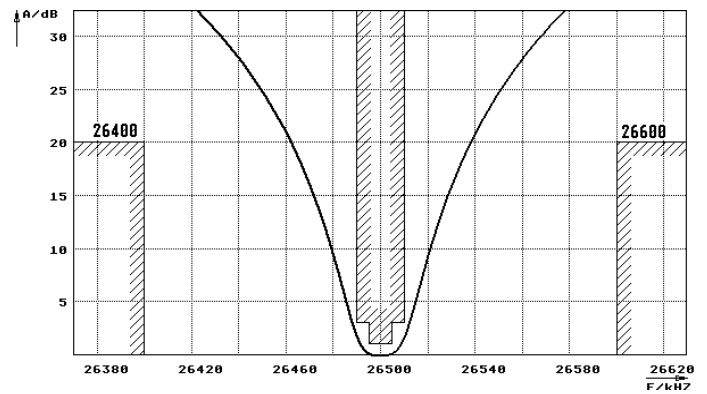
Operating temp. range	$^{\circ}\text{C}$	-20... +70
-----------------------	--------------------	------------

### Characteristics MQF26.5-2000/01

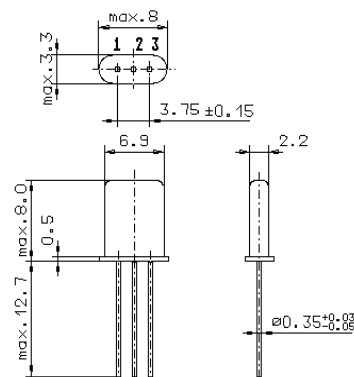
#### Pass band



#### Stop band



Pin connections: 1 Input  
2 Input-E  
3 Output  
4 Output-E



GH9